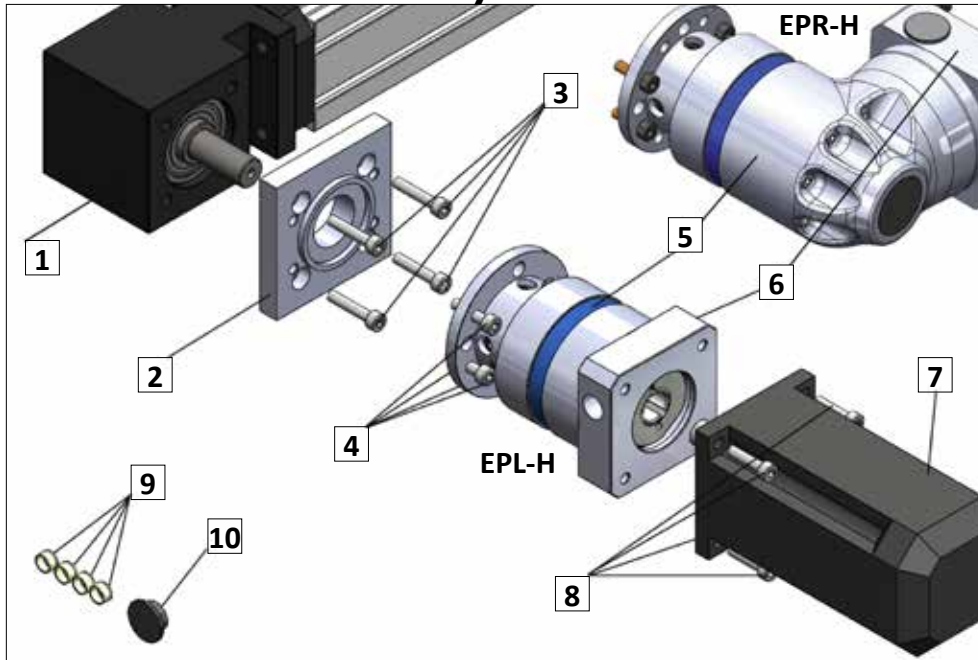




# ► EPL-H & EPR-H - Installation Instructions

## Assembly Overview



Item#	Description
1	Actuator (Not Included)
2	Output Adapter Plate
3	Bolts - Actuator
4	Bolts - Output Adapter Plate
5	EPL-H (Inline) or EPR-H (Right Angle) Gearbox
6	Motor Adapter Plate
7	Motor (Not Included)
8	Bolts - Motor
9	Plugs - Gearbox Output Housing
10	Plug - Motor Adapter Plate

**NOTES** - These installation instructions are intended to help in the use of this gear unit as well as to maximize the life of the gearbox. Technical specifications can be found in the catalog or online at [www.gamweb.com](http://www.gamweb.com). All gear units are supplied filled with lubrication. They are lubricated for life and do not require a lubrication change. However, to extend the life of the gearbox, lubrication can be changed every 10,000 hours of operation. Consult GAM for lubrication changing procedure. The gear unit may also be mounted in any orientation without any concern for lubrication. To avoid any distortion or damage to the input clamping element of the gear unit, assembly to the motor should be performed in the vertical position.

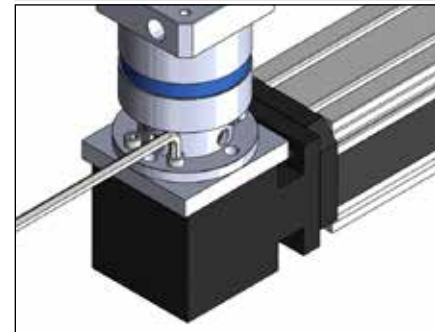
## Installing Gearbox to Actuator



**Step 1 - Install the output adapter plate to the actuator.** Ensure all mounting surfaces are clean. Using the bolts [#3] provided, secure the output adapter plate to the actuator. Tighten the bolts as noted in **TABLE 1**.

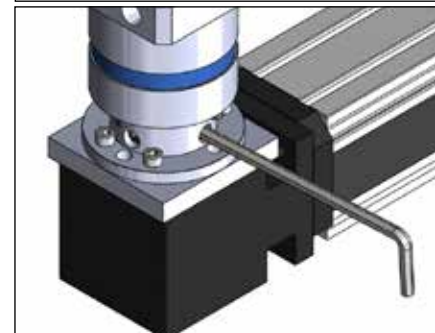


**Step 2 - Mount the gearbox to the actuator.** Ensure all mounting surfaces are clean. With the gearbox and actuator shaft **VERTICAL**, insert the gearbox onto the actuator.



**Step 3 - Secure the gearbox to the actuator.** Tighten the bolts[#4] as noted in **TABLE 1**.

*Note* - A low profile (stubby) allen wrench may be required for best access to the mounting bolts.



**Step 4 - Secure the gearbox output clamping element to the actuator shaft.** Rotate the gearbox input until the four gearbox output clamping element bolts are visible. Tighten the four gearbox output clamping element bolts in a crosswise pattern and torque down in two stages as noted in **TABLE 2**.



# ► EPL-H & EPR-H - Installation Instructions

## Torque Information

**Table 1 - General Bolt Information**

Bolt Size	Hex Size	Torque Nm (in-lbs)	
M4	3mm	4	(35)
M5	4mm	8	(71)
M6	5mm	13	(115)
M8	6mm	31	(274)
M10	8mm	62	(549)
M12	10mm	108	(956)

**Table 2 - Gearbox Output Clamping Element**

Gearbox Size*	First Round		Second Round	
	Torque Nm (in-lbs)		Torque Nm (in-lbs)	
EPL/R-H-064	7	(62)	14	(124)
EPL/R-H-084	15	(133)	30	(267)
EPL/R-H-118	20	(177)	40	(354)

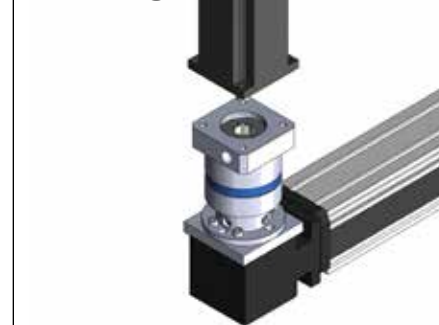
**Table 3 - Gearbox Input Clamping Element**

Gearbox Size*	Torque Nm (in-lbs)	
	EPL/R-H-064	6
EPL/R-H-084	9	(80)
EPL/R-H-118	20	(177)

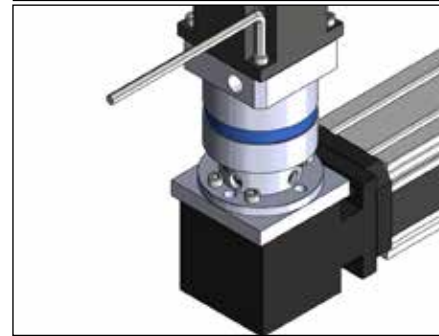
\*Applies to EPL-H and EPR-H

**Note** - All bolts should be uniformly tightened in a crosswise pattern. A torque wrench should be used to confirm accurate torque values.

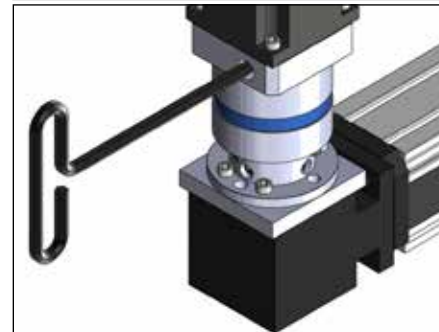
## Installing Motor to Gearbox



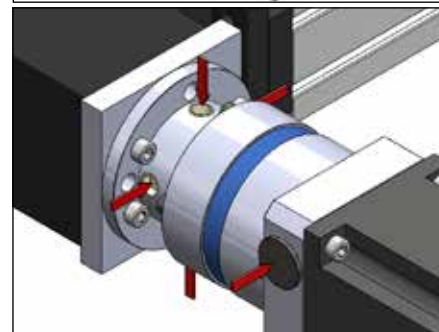
**Step 5 - Install the motor to the gearbox.** Ensure all mounting surfaces are clean. Remove motor key if present. Align the gearbox input clamping element bolt with the motor adapter plate access hole. With the motor and gearbox **VERTICAL**, insert the motor shaft into the input of the gearbox



**Step 6 - Secure the motor to the gearbox.** Confirm that the motor face is flush with the motor adapter plate. Tighten the motor bolts [#8] by hand in a crosswise pattern until snug. Then again in a crosswise pattern, fully tighten the bolts as noted in **TABLE 1**.



**Step 7 - Secure the motor shaft to the gearbox input.** Ensure the gearbox input clamping element bolt is visible through the motor adapter plate access hole. Tighten the gearbox input clamping element bolt to the motor shaft as noted in **TABLE 3**.



**Step 8 - Insert plugs [#9] and [#10] to protect access holes.**